

\$9,180,000

New Construction

Fall 2015

Bill Burns  
Verona City Administrator  
(former)  
City of Middleton  
7426 Hubbard Ave.  
Middleton, WI 53562  
bburns@ci.middleton.wi.us  
608.821.8356

## RELATED EXPERIENCE

### NEW FIRE & EMS STATION VERONA, WI

This proposed design for a new fire station was recently completed for the Verona Fire Department. The new 8-bay central station includes a large apparatus/emergency vehicle bay with administrative offices on the first level and living quarters for staff and interns on the second level. The new station occupies a prominent site and the Prairie Style architecture reflects the local urban fabric. The Architectural Design was the result of numerous public presentations and open house forums during both programming and schematic design phases of the project. Designed to Self-Performing LEED Silver, the station is a high performing building. Completed on time and under budget.

#### Project Specific Elements:

- 44,000 Square Feet
- Career EMS
- Training
- LEED Silver (Self Performing)
- Combination Department
- Living Quarters
- Station Alerting System
- Historic Display



\$6,000,000

New Construction

Spring 2016

Randy Banker, Fire Chief  
303 Milton Avenue  
Janesville, WI 53545  
608.755.3050  
jensenj@ci.janesville.wi.us

## RELATED EXPERIENCE

### NEW FIRE & EMS STATION JANESVILLE, WI

The City of Janesville retained Five Bugles Design to replace its aging Central Fire Station located on Milton Avenue; a gateway to Janesville's Downtown. The new station is located on adjacent parcels allowing for existing 24/7 Fire & EMS protection. Architecturally the new station is inspired by many of the features of the existing station it is replacing. The Architectural Design was the result of numerous public presentations and open house forums during both programming and schematic design phases of the project. The station recently received a *Notable Mention Award* from *Firehouse* magazine. As important, it was the 2nd lowest cost per square foot of all contestants. Completed on time and under budget.

#### Project Specific Elements:

- 33,000 Square Feet
- Career EMS
- Training Center
- LEED Silver (Self Performing)
- Combination Department
- Living Quarters
- Station Alerting System





# Five Bugles Design

a division of Wendel

\$4,000,000

New Construction

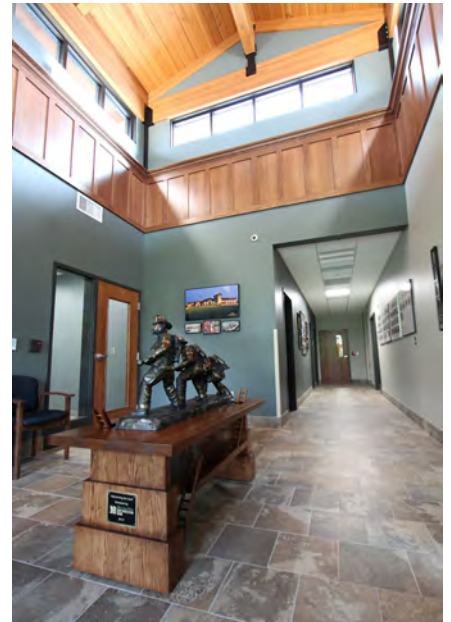
Spring 2017

Michael L. Hepfler,  
Fire Chief  
211 Bay Street  
Chippewa Falls, WI 54729  
715.723.5710  
mhepfler  
@chippewafalls.wi.gov

## RELATED EXPERIENCE

### NEW FIRE & EMS STATION CHIPPEWA FALLS, WI

The City of Chippewa Falls selected Five Bugles Design to provide a comprehensive G.I.S. Site Selection Study as well as Architectural Design Services for the City's new Central Fire Station. Various sites were reviewed throughout the City and a site was chosen that best fits the response times. The Architectural Design was the result of numerous public presentations and open house forums during both programming and schematic design phases of the project. The project was completed in April 2017, on time and under budget.



\$4,800,000

New Construction

2010

Scott Owen, Fire Chief  
City of Marshfield  
Fire Department  
412 East Fourth Street  
Marshfield, WI 54449  
715.486.2090

## RELATED EXPERIENCE

### NEW FIRE & EMS STATION MARSHFIELD, WI

Steve Gausman and Robert Krzyzanowski assisted the Marshfield Building Committee in reviewing fifteen various sites within the stipulated geographical area. Space Programming sessions were conducted with the Building Committee over multiple dates. As a result of this study, Marshfield Fire and Rescue decided to move ahead with a 31,000+ SF facility, completed on schedule and under budget. The proposed design was constructed as an urban infill project on a downtown site that accommodates several sustainable features. The City of Marshfield is a leading proponent of sustainability and achieved a LEED Gold certification for this facility. The Architectural Design was the result of numerous public presentations and open house forums during both programming and schematic design phases of the project. Additionally, the building's design further resulted from meetings with the local Historical Society to incorporate design elements of past Marshfield buildings. Public Relations techniques included interviews on Public Radio.

#### Project Specific Elements:

- 37,000 Square Feet
- Living Quarters
- LEED Gold
- Training Center
- EMS





\$11,500,000

New Construction

2013

Sean Walther  
Senior Planner  
5005 Minnetonka Blvd.  
St. Louis Park, MN 55416  
952.924.2574  
swalther@stlouispark.org

## RELATED EXPERIENCE

### TWO NEW FIRE STATIONS ST. LOUIS PARK, MN

St. Louis Park Fire Department's two facilities were built in the 1960's. Like many facilities of that vintage they were too small for the equipment and staff they housed, lacked gender equity, had single loaded apparatus bays fronting on busy thoroughfares and suffered from structural failure of the apparatus bay floors.

#### Project Specific Elements

- 32,000 SF Headquarters Station with a 16,000 SF Satellite Station
- Training Center
- Alerting System
- Fitness and Health Spaces
- LEED Silver (Self Performing)

Station No. 2, St. Louis Park's satellite station, shared space with a City park. The project assumed that construction of this facility would require its closure and relocation of personnel and equipment due to space constraints. Working closely with the Fire Department, the City and the Parks Department, the Team was able to construct this project while keeping Station No. 2 open and in operation and without taking any more park property than the original plan to demolish and rebuild within the existing station footprint. This effort saved over a year on the project time line and maintained superior fire service to the community throughout the construction process. Software used: Revit®



# Five Bugles Design

a division of Wendel

\$3,800,000

New Construction

2016

Wayne Chenier, Fire Chief  
Ashland Fire Department  
300 Stuntz Ave  
Ashland, WI 54806  
715.682.7052  
wchenier@coawi.org

## RELATED EXPERIENCE

### NEW FIRE & EMS STATION ASHLAND, WI

The City of Ashland had worked with the Five Bugles Design team for over 12 years and through multiple studies. In November 2014, the citizens of Ashland passed a referendum for a new fire station by 69%. The new 21,240 SF station was bid in February 2015 with bids coming in under budget. The new station recently celebrated its grand opening.





# Five Bugles Design

a division of Wendel

\$2,170,000

New Construction

April 2017

John Pechman  
City Administrator  
651.257.4162  
jpechman  
@ci.chisago.mn.us

## RELATED EXPERIENCE

### CHISAGO FIRE STATION

Chisago City Minnesota Fire Department has been serving their community from their existing station since the 1960's. Five Bugles Design was hired to design their new facility. An extensive programming and preliminary design phase helped the department balance their needs against the construction budget. Ultimately, this Paid on Call department's new facility will meet their needs with new bay space for all of their apparatus as well as classroom training, physical training, and office space. A critical element of the design was maintaining a kitchen and dayroom space adequate for their monthly drill night and dinner; a critical cultural element for the department.





\$4,800,000 (est.)

New Construction

2018 (est.)

Shannon Draper, Fire Chief  
420 Plum Street  
Red Wing, MN 55066  
651.385.3695  
thomas.schneider  
@ci.red-wing.mn.us

## RELATED EXPERIENCE

### RED WING STATION NO. 2

Red Wing, Minnesota retained Five Bugles Design for a comprehensive study of a new fire/training facility to be located on the City's north side.

The 2.6 acre site is optimally located for excellent response times and additionally provides significant training opportunities. The design provides for 6 dorm rooms, a large training room, and drive through apparatus bays equipped within-floor radiant heat and four fold doors. This 18,000 square foot, 3-bay station will be the City's second station. It will provide emergency services including EMS to a segment of the City that has grown to include one third of the department's calls. Construction is anticipated to be complete in 2018. Software used: Revit®





